



# **314 CMR 16.00: Notification Requirements to Promote Public Awareness of Sewage Pollution**

## **SSO Notification**

*Maret Smolow, Program Manager, Environmental Compliance and Monitoring*

April 12, 2022



# Why You Need to Know

Any municipality operating a sewer system must send public notifications when they have:

- Certain Sanitary Sewer Overflows (SSOs)
- Combined Sewer Overflows (CSOs)
- Discharges of partially treated wastewater






# Current SSO Requirements

## 314 CMR 12.00:

- Report to DEP, EPA, local BOH, and where applicable, DCR, DMF, and Drinking Water Resource Managers within 24 hours
- Submit DEP SSO form to DEP and EPA within 5 days

 **Massachusetts Department of Environmental Protection**  
Bureau of Water Protection – Wastewater Management Program FOR DEP USE ONLY  
**Sanitary Sewer Overflow (SSO)/Bypass**  
Notification Form Tax Identification Number

---

**A. Reporting Facility**

**Important:** When filling out forms on the computer, use only the tab key to move your cursor - do not use the return key.

1. Facility Information

Reporting Sewer Authority Permit #

2. Authorized Representative Transmitting Form:

First Name Last Name Telephone No.

Title E-mail Address

**B. Phone Notifications:**

1. **MassDEP staff contacted:** first name last name

Date/Time contacted: Date Time ☐ am ☐ pm

2. **EPA staff contacted:** first name last name

Date/Time EPA contacted: Date Time ☐ am ☐ pm

3. **Board of Health contacted:** First Name Last Name

Date/Time contacted: Date Time ☐ am ☐ pm

4. Others notified (select all that apply): ☐ Conservation Commission

☐ Harbormaster ☐ Shellfish Warden ☐ Division of Marine Fisheries

☐ Downstream Drinking Water Supplier ☐ Watershed Association

☐ Beach Resource Manager ☐ Other: (specify)

**C. SSO Information**

1. SSO Discovered: Date Time ☐ am ☐ pm

By: \_\_\_\_\_

2. SSO Stopped: Date Time ☐ am ☐ pm

3. SSO Discharge from: ☐ Sanitary Sewer Manhole ☐ Pump Station

☐ Backup into Property ☐ Other: (specify)

4. SSO Discharge to: ☐ Ground Surface (no release to surface water)

☐ Direct to Receiving Water (surface water)

☐ Catch basin to Receiving Water (surface water)

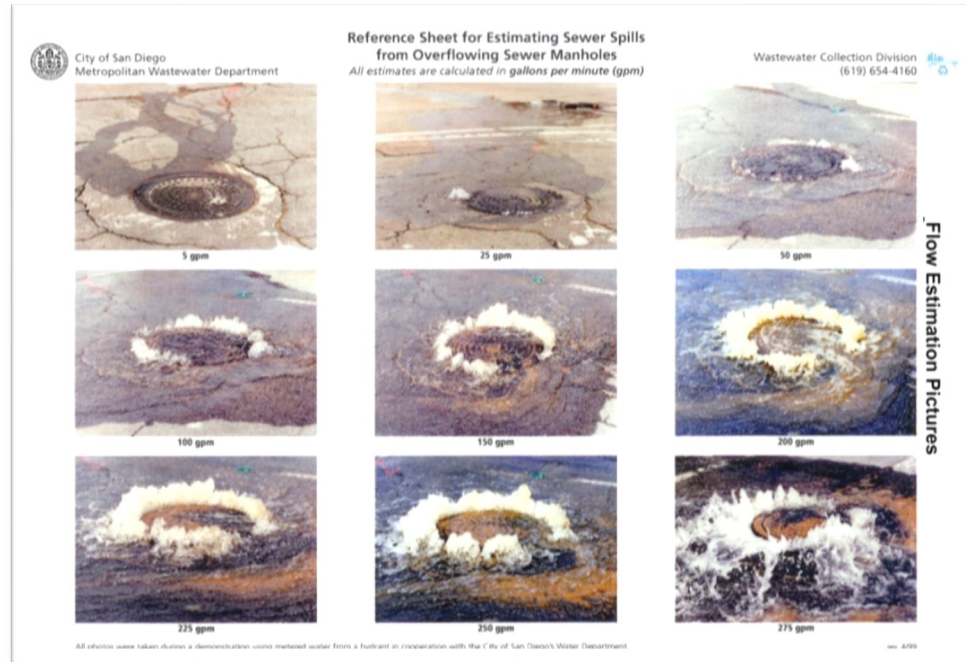
☐ Backup into Property Basement

Form - SSO Notifications, revised.doc • rev. 01/2013 Wastewater Overflow/Bypass or Sewage Backup Notification • Page 1 of 3



# SSO Requirements

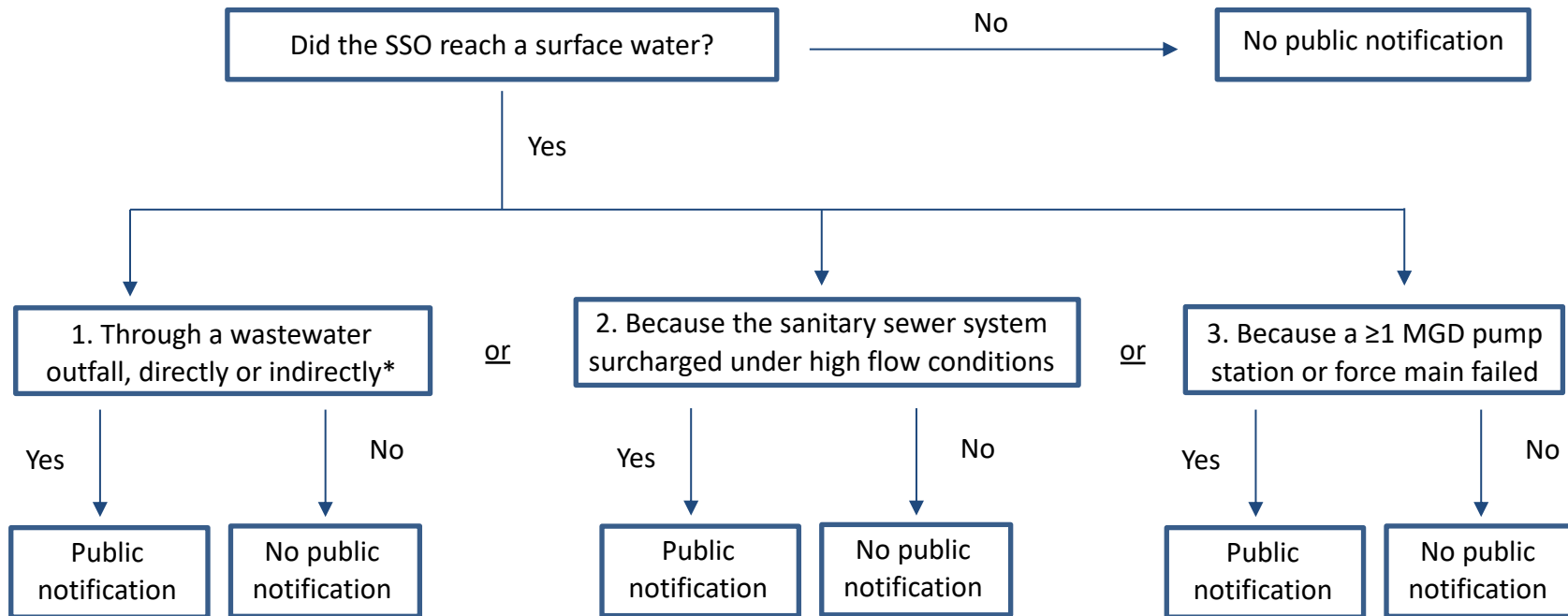
Not all SSOs require notification under 314 CMR 16.00; all SSOs require reporting under 314 CMR 12.00





# Public Notification – Certain SSOs

Does an SSO require public notification under 314 CMR 16.00?



\* A stormwater outfall is not a wastewater outfall. If an SSO enters a catch basin, you are only required to send a public notification if the SSO was caused by high flow conditions in the sewer system (aka wet weather).



# Public Notification – SSO Notification Plan



**Massachusetts Department of Environmental Protection**  
Bureau of Water Resources – Wastewater Management Program  
**Sanitary Sewer Overflow Public Notification Plan**

**Important:** When filling out forms on the computer, use only the tab key to move your cursor - do not use the return key.



## 1. Facility Information

Name of Permittee (Facility or System) \_\_\_\_\_

Permittee Contact Name \_\_\_\_\_

Email Address \_\_\_\_\_

Permittee Mailing Address \_\_\_\_\_

NPDES Permit # (only for system with a wastewater treatment plant) \_\_\_\_\_

Phone Number \_\_\_\_\_

System contains (check all that apply):

☐ Collection system

☐ Pump station(s)

☐ Wastewater treatment plant

Location of WWTP discharge, if applicable: \_\_\_\_\_

Please attach a map with locations of discharges and affected waterbodies.

## 2. Identification of Environmental Justice Populations

Are there Environmental Justice (EJ) populations that would potentially be affected by your wastewater treatment plant discharge(s) or a sanitary sewer overflow?

☐ Yes

☐ No

If there are EJ populations that would potentially be affected, do 25% or more of households lack English-language proficiency, and at least 5% of the population has speakers who self-identify as "do not speak English very well"?

☐ Yes

☐ No

Provide a list of all languages that notifications will be translated into: \_\_\_\_\_

Does your municipality provide translation of municipal documents in the languages listed above?

☐ Yes

☐ No

If you answered "yes" above, does your municipality's staff provide translation of municipal documents, or are translation services outsourced?

☐ Municipal Staff

☐ Outsourced

## 3. Discharges, Overflows, and Public Notification Content

When public notification is required: (check box to affirm)

- By July 6, 2022
  - Submit SSO notification plan to DEP
  - Fillable PDF is mostly a checklist
  - The details are in the instructions!



## Public Notification – SSO Notification Plan

- Things to note:
  - Include an attachment with a map of discharge locations and affected waterbodies
  - Provide a list of all languages the notifications will be translated into
  - If you cannot meet some of the requirements, include an explanation why and any remedies or measures needed
- Plan and instructions can be found at:  
<https://www.mass.gov/regulations/314-CMR-1600-notification-requirements-to-promote-public-awareness-of-sewage-pollution>





# Public Notification – Timeframes

## Beginning July 6, 2022

- Send notification within 6 hours (4 hours to discover/confirm + 2 hours to notify) and post on website
- Send update 8 hours after the initial notification
- If SSO lasts >8 hours, send cessation update within 2 hours
- Send retraction (if necessary) within 48 hours







## Public Notification – Who Gets Notified

Required	If May Be Affected
DEP*	Public water suppliers
EPA*	DMF (shellfish growing areas)*
DPH*	DCR (water recreation properties)*
Municipal BOH where discharge is located	Division of Fisheries and Wildlife (boat ramps and fishing piers)*
Municipal BOH and shellfish constables directly impacted	Operators of bathing beaches
Subscribers	
Two largest news organizations (plus one that serves EJ population(s))	

\* DEP provided contact information in the SSO Notification Plan instructions



# Public Notification – Website

## MWRA SANITARY SEWER OVERFLOW (SSO) NOTIFICATIONS

A Sanitary Sewer Overflow (SSO) is an unintentional discharge of wastewater to the environment prior to reaching a treatment facility. SSOs occur on infrequent occasions when the capacity of the sewer system is exceeded, usually due to extreme conditions such as heavy rainfall, or an obstruction or break in sewer lines.

[Go to SSO Notifications.](#)



[Subscribe to MWRA notifications](#)

More about SSOs and how to help prevent them

[Boston Water and Sewer Commission SSO Notifications](#)

## OTHER NOTIFICATIONS

**Discharge of blended flows:** In very wet weather, MWRA sometimes has to partially treat some flows in order not to overwhelm the system. These primary treated flows are blended with fully treated flows and disinfected before discharging more than 5 miles from shore. All flows meet water quality limits.

[Go to Blending Notifications.](#)

- Post public notifications
- Link to subscribe
- Information about any treatment provided
- Links to websites providing information on the closure or advisory status of shellfish growing areas, bathing beaches, or other water resource areas potentially affected



## Public Notification – New Reporting Requirements

Using DEP's reporting system (currently being developed):

- Report discharges within required timeframe
- By the 15<sup>th</sup> of each month, submit a compilation of data from all overflows in the previous month
  - Estimated duration and volume
  - Rainfall data
  - Treatment provided to CSOs or partially treated discharges
- Submit corrections and updates for previous calendar year by February 1<sup>st</sup>



## Public Notification – Public Health Warnings

- Boards of health/health departments also have requirements
  - Issue warnings using existing emergency notification systems
  - Post temporary signs
- Information at: <https://www.mass.gov/guides/sanitary-sewer-systems-combined-sewer-overflows#-sanitary-sewer-systems-&-combined-sewer-overflows->



## Public Notification – More Information

- For more information or if you have questions contact DEP
  - Call: 617-259-0537
  - Email: [massdep.npdes@mass.gov](mailto:massdep.npdes@mass.gov)
  - Visit: <https://www.mass.gov/regulations/314-CMR-1600-notification-requirements-to-promote-public-awareness-of-sewage-pollution>



## Questions?

Maret Smolow

[Maret.Smolow@mwra.com](mailto:Maret.Smolow@mwra.com)